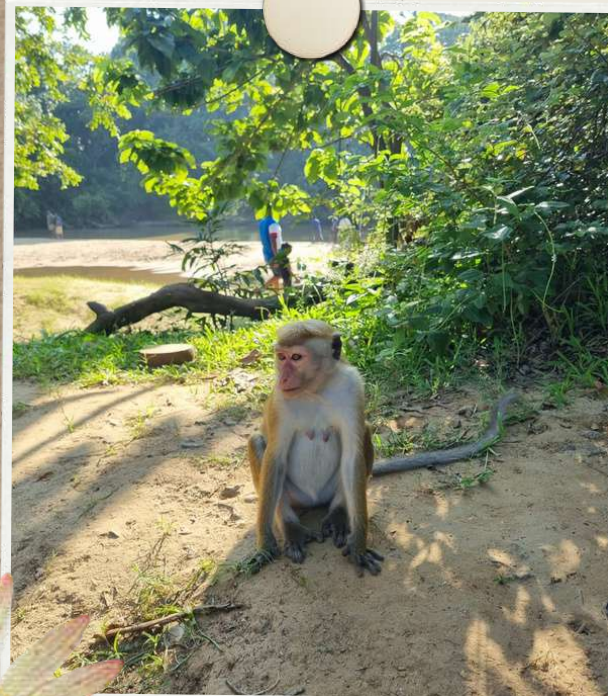




Golden Beach Paradise - Trips around our Hotel

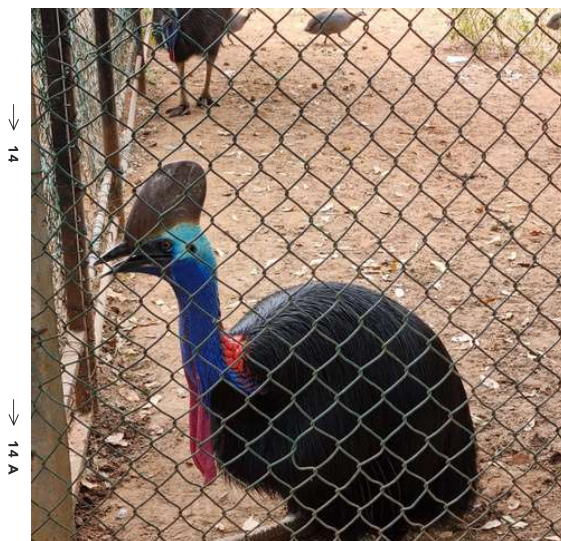
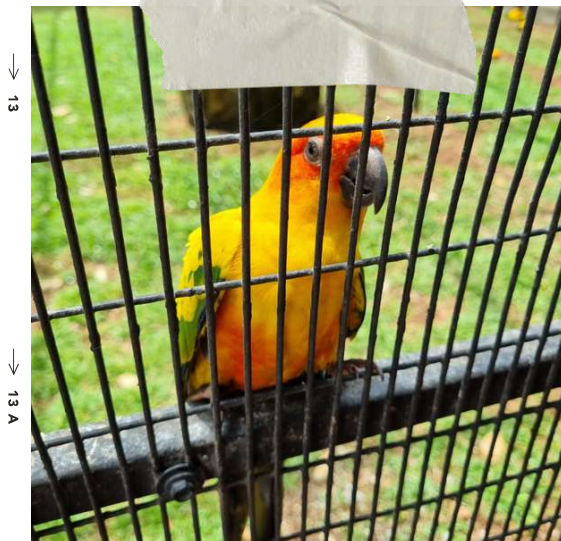


Hambantota Bird Park

Welcome to Bird Park. Asia's largest bird park and research center is located in Hambantote , Sri Lanka.

The bird park is home to endemic and exotic birds with more than 180 species and approximately 3,200 birds. The park is spread over a 35-acre area designed for bird enthusiasts and those studying ornithology. Also for small bird enthusiasts.

The park is a 50-minute drive from our hotel.

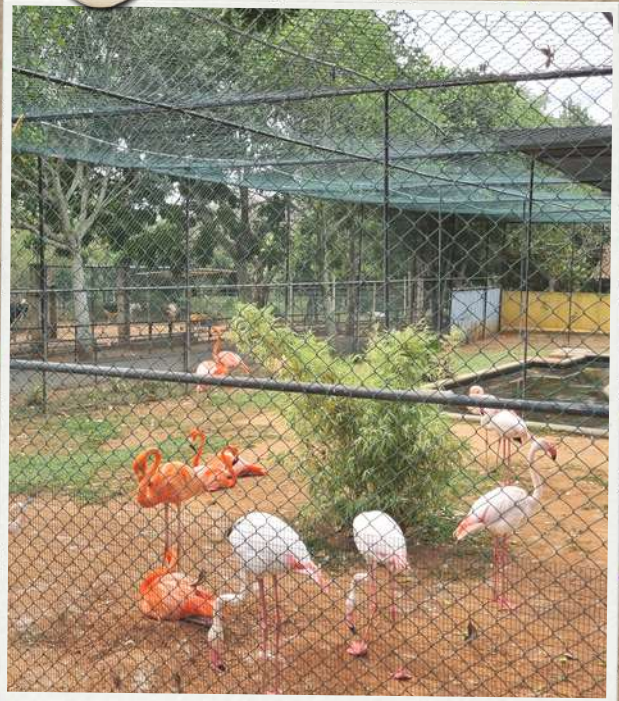




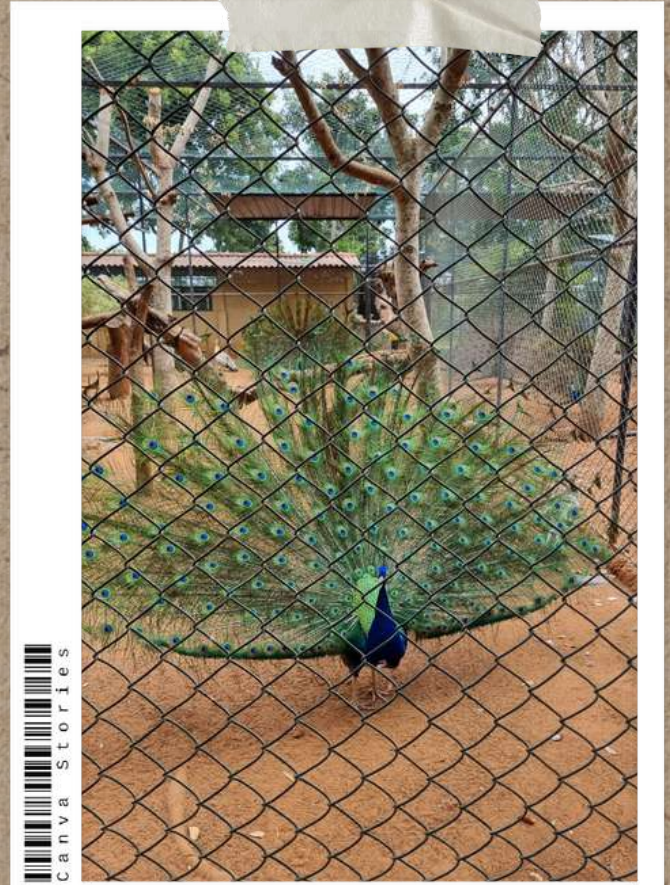
FILM NEGATIVE



FILM NEGATIVE



Hambantota Bird Park



Canva Stories



→ 13

→ 13 A

→ 14

→ 14 A

Rekawa Turtle Watching

Rekawa Turtle Watch is a sea turtle conservation project that aims to protect turtle nesting sites and ensure that eggs can hatch safely. Visitors can go to see turtles every night of the year. Volunteers from the center lead groups between 8:30 pm and 11:30 pm to the beach, where you can watch turtles laying eggs or returning to the sea. Waiting for the turtles to appear can take several hours, but our hotel has good cooperation with volunteers, so we will take you to the beach when the turtles are there and you don't have to wait, sometimes for several hours. During the high season (April - July) 5-15 turtles appear every night, while in the low season (October - January) it is about 2-4. This place is 5 minutes away by car or 10 minutes by tuk tuk.





FILM NEGATIVE

FILM NEGATIVE



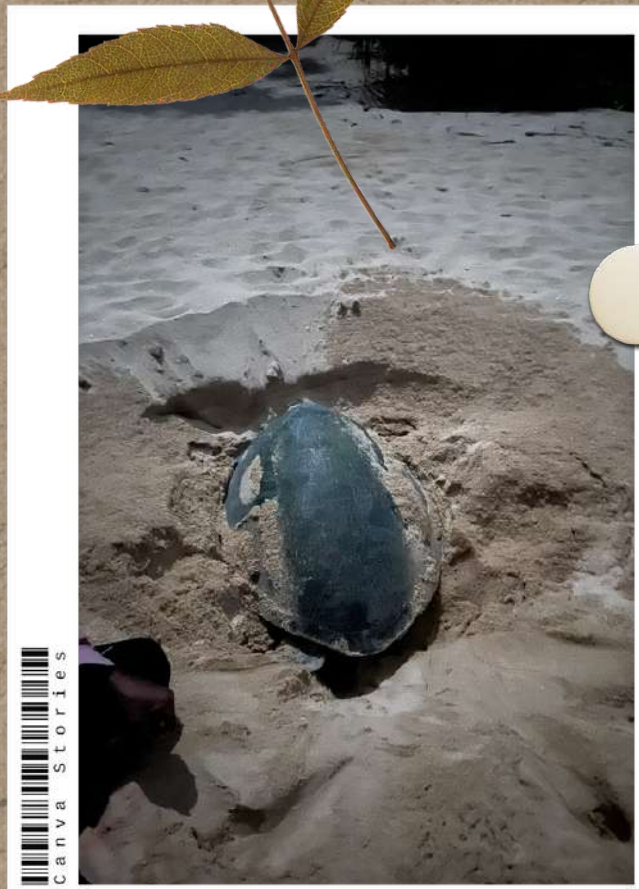
Rekawa Turtle Watching



Canva Stories



FILM NEGATIVE



Canva Stories



→ 13

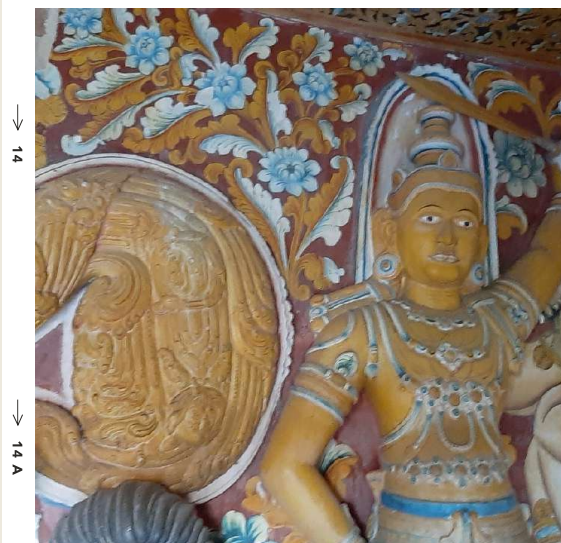
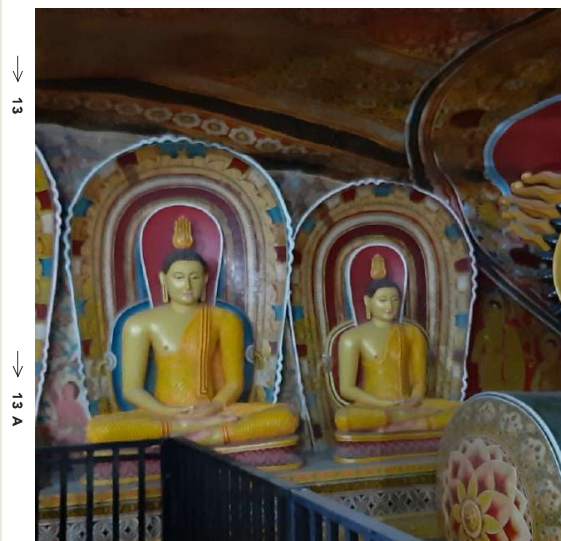
→ 13 A

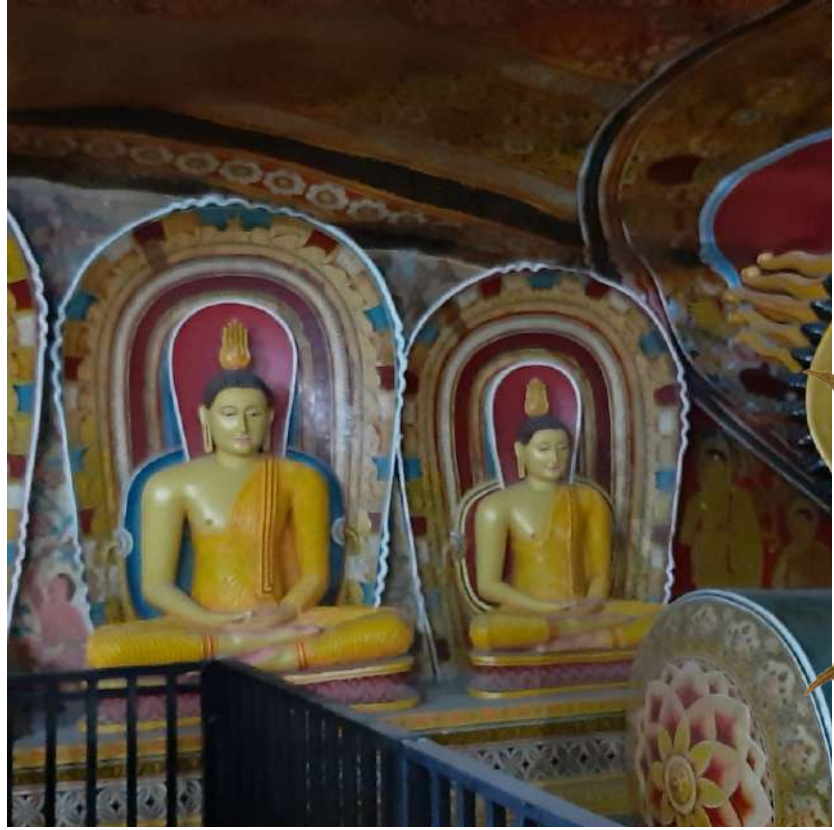
→ 14

→ 14 A

Mulgirigala Rock Temple

The full name Mulkirigala Rajamaha Viharaya is often described as "Little Sigiriya". The temple is located in the village of Mulkirigala which is 21 km from Tangalle, about 30 minutes by car from our hotel. As the name suggests, this is a rock temple, which consists of a series of rock temples carved from the face of a huge rocky outcrop, during the second century BC. At the top of the hill where the ascent is located, you have to climb 533 steps. It sounds tiring, but when you start climbing, you won't feel tired, because the temple environment will calm you down and give you an impulse to continue. At the top, you will see a beautiful view of the surrounding countryside and nature as a reward.





FILM NEGATIVE

→ 13

→ 13 A



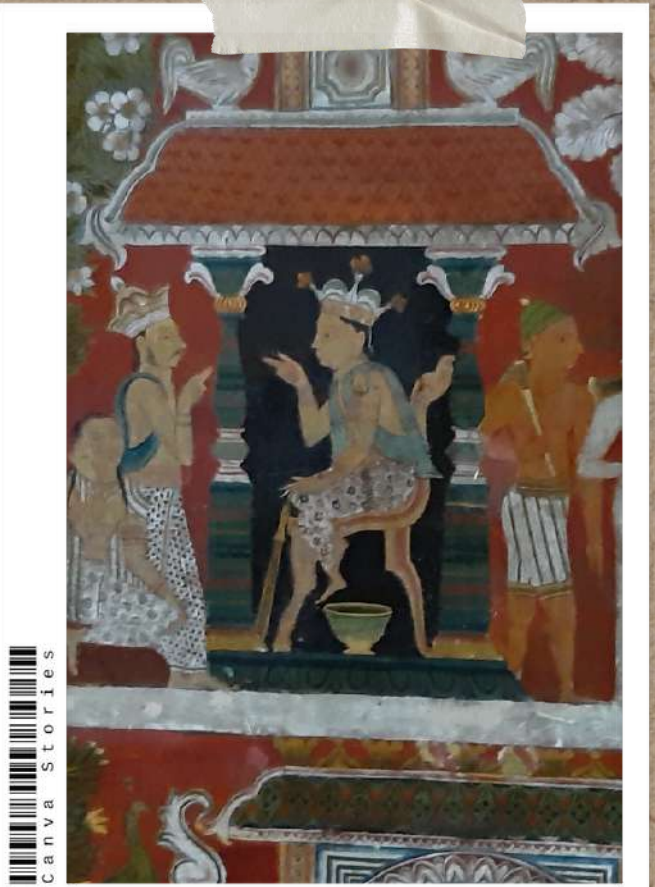
FILM NEGATIVE

→ 14

→ 14 A



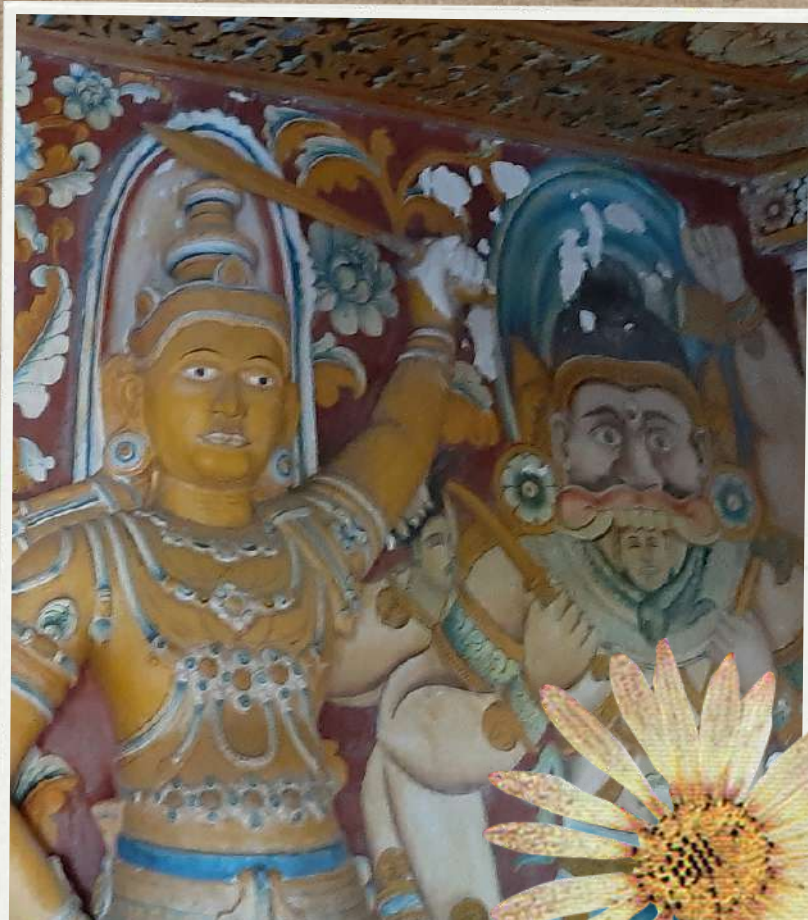
Mulgirigala Rock Temple



Canva Stories

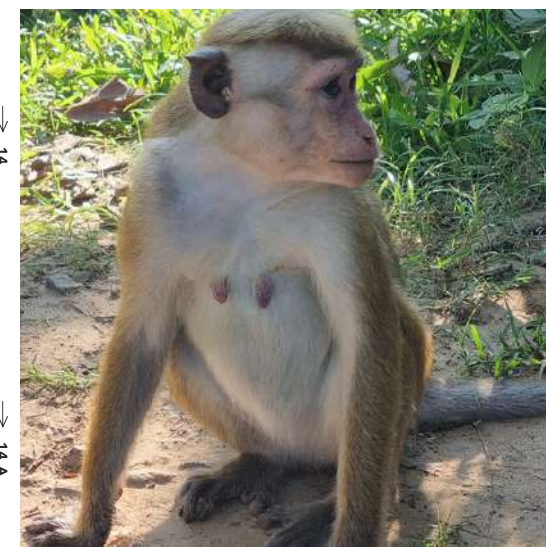


Canva Stories



Yalla National Park

Yalla National Park is a vast area of forests, pastures and lagoons bordering the Indian Ocean in southeastern Sri Lanka. It is home to wildlife such as leopards, elephants and crocodiles, as well as hundreds of bird species. If you are interested, we can provide you with this experience on the basis of a jeep safari trip. The safari lasts about 2-3 hours. The best time for a safari is 6-7 o'clock in the morning. Yalla National Park is an hour's drive from the hotel.





→ 13

→ 13 A

FILM NEGATIVE

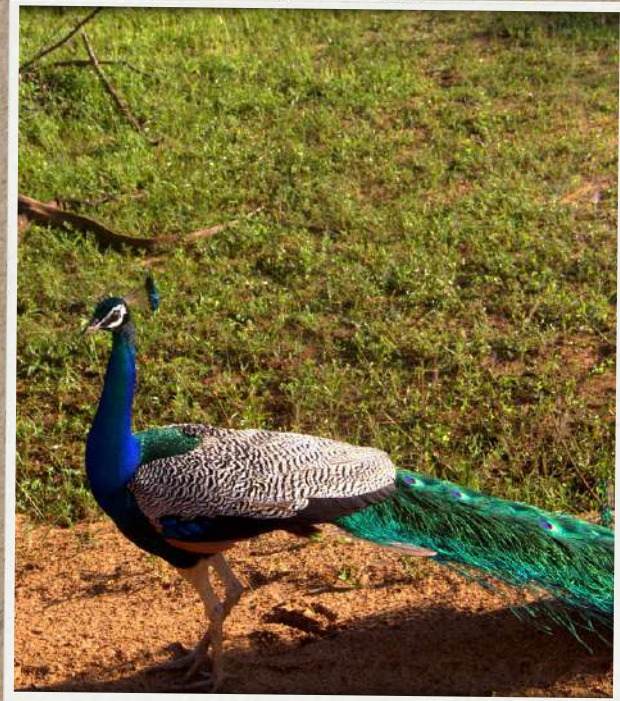


→ 14

→ 14 A

FILM NEGATIVE

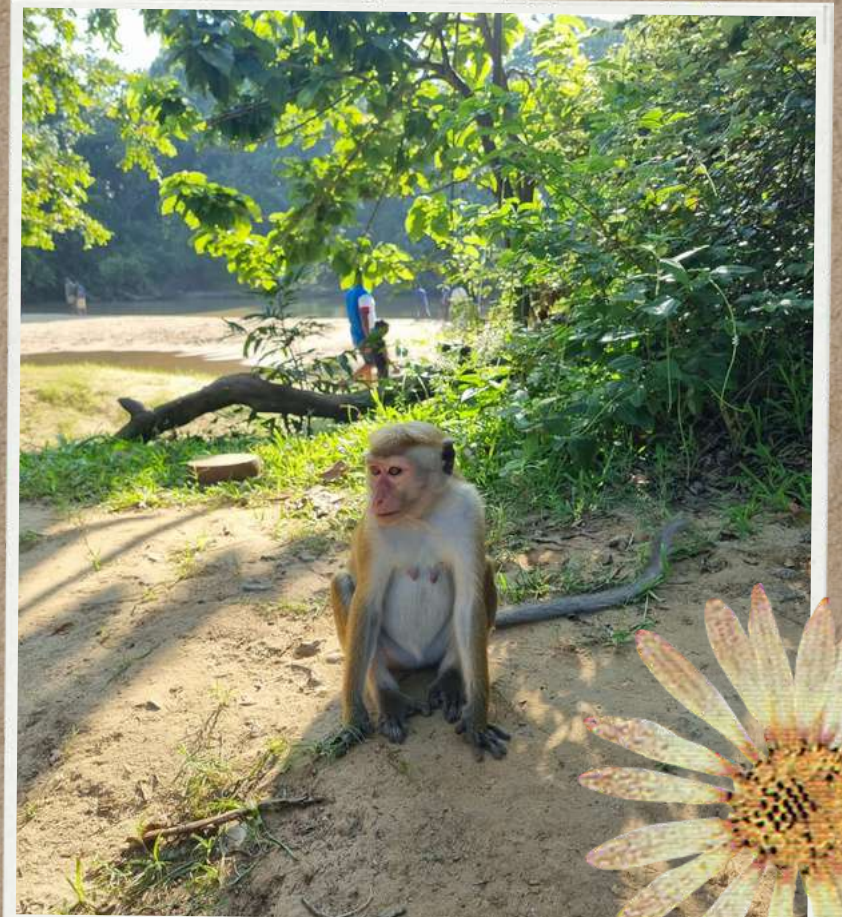
FILM NEGATIVE



Yalla National Park



canva



canva stories

Hikaduwa-swimming with Turtles

Turtles in Hikkaduwa are usually found swimming right in front of the Hikka Tranz by Cinnamon. Turtles in Hikkaduwa can be found, fed and swam with them on Turtle Beach all year round. It is best to go to Turtle Beach as close to the sunrise as possible, not only because of the scenery but also because there are the fewest tourists on the beach at that time. You have turtles in the palm of your hand at that time. Hikkaduwa is also known for its beautiful diving and snorkelling spots. Be sure not to miss this experience. Hikkaduwa can be reached by car from our hotel in less than 1 hour and 50 minutes....





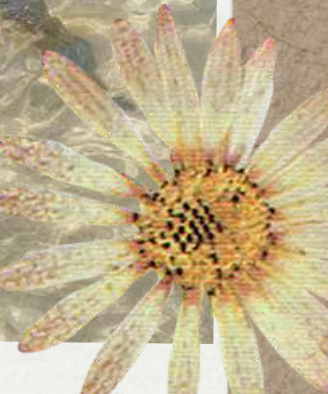
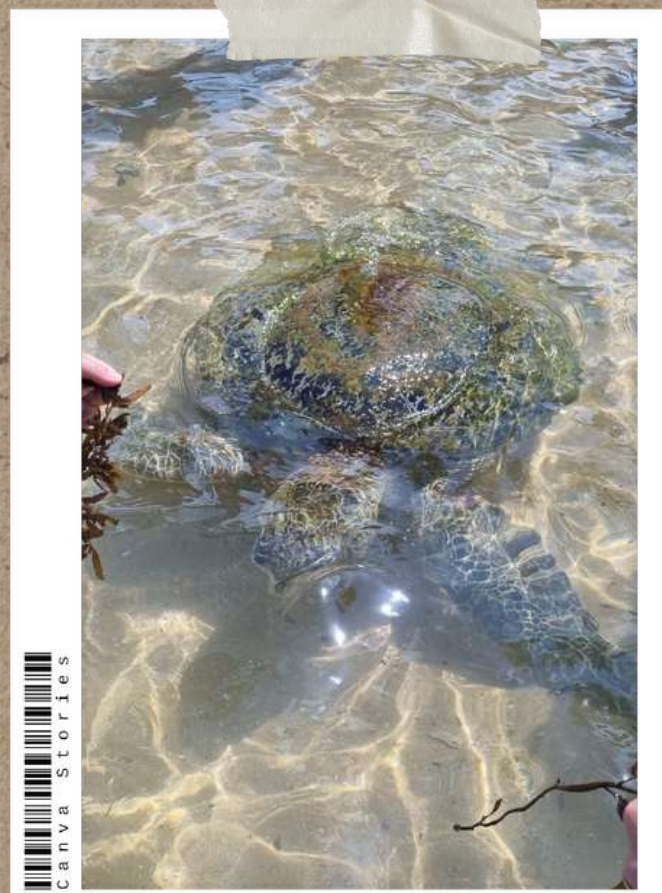
FILM NEGATIVE



FILM NEGATIVE



Hikaduwa- swimming with Turtles



Udawalawe- National Park

Udawalawe is undoubtedly the best place in Sri Lanka where you can see wild Asian elephants all year round, there are about 500 elephants in the park and they often roam in herds. The best hours to visit the park are 6 am and 3 pm. Late evening also provides photographic opportunities in the background of the most beautiful sunsets. Other attractions of the park that keep the elephant herds company are water buffalo, wild boar, spotted deer, sambur deer, jackal, samber, black-headed hare, mongooses, bandicuts, foxes, endemic macaques. Another observation is the observation of a leopard and other smaller cats, such as Fishing cat and Jungle cat. The national park is an hour's drive from our hotel.





FILM NEGATIVE

FILM NEGATIVE



FILM NEGATIVE

→ 13

→ 13 A

→ 14

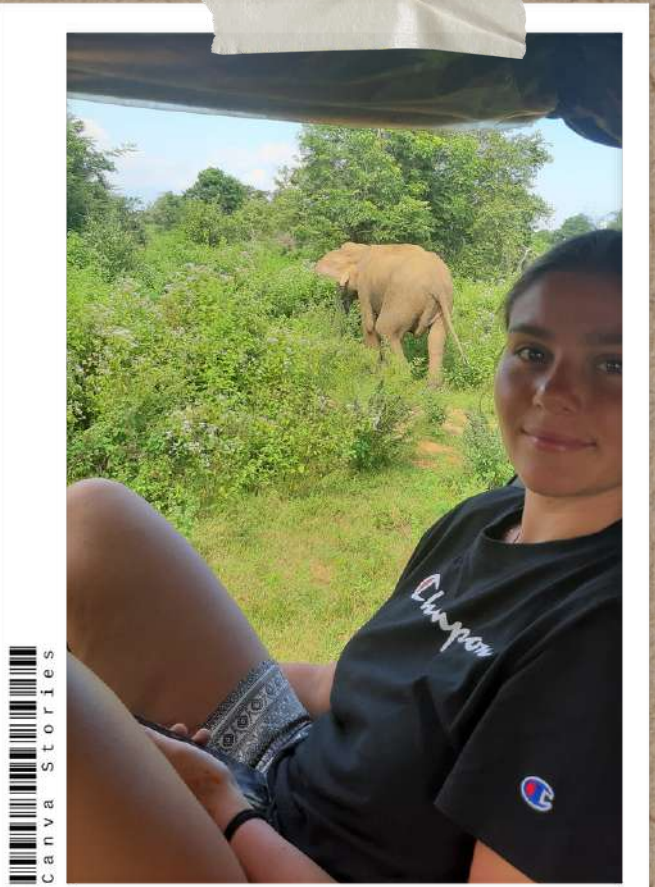
→ 14 A



Udawalawe-national park



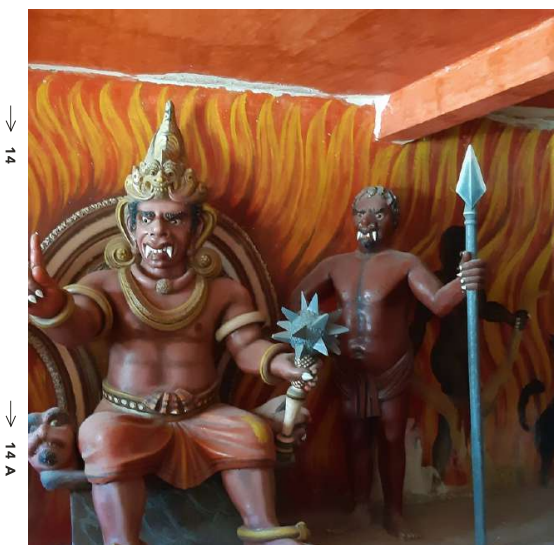
Canva Stories



Canva Stories

Wewrukannala Temple

The full name of this temple is Wewrukannala Raja Maha Viharaya. It is one of the holiest cities for Sri Lankans. They come here to pray and see the largest sitting Buddha statue on the island (50 meters high). But for tourists, this place is interesting not only the statue. To get to the statue, you must first walk through a long corridor of horror. Here, horrific images of the punishment of sinners by demons are spray-painted on the walls, and at the entrance there are several scenes with life-size statues, again on the subject of the punishment of sinners. The scenes and images are really appalling, which is not typical of Buddhist temples. The temple is 45 minutes away from our hotel.





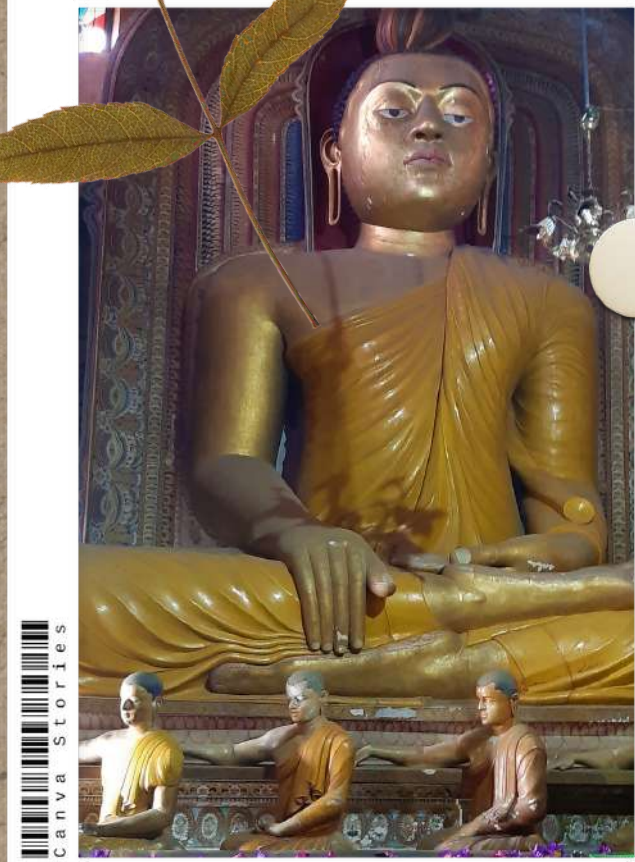
FILM NEGATIVE



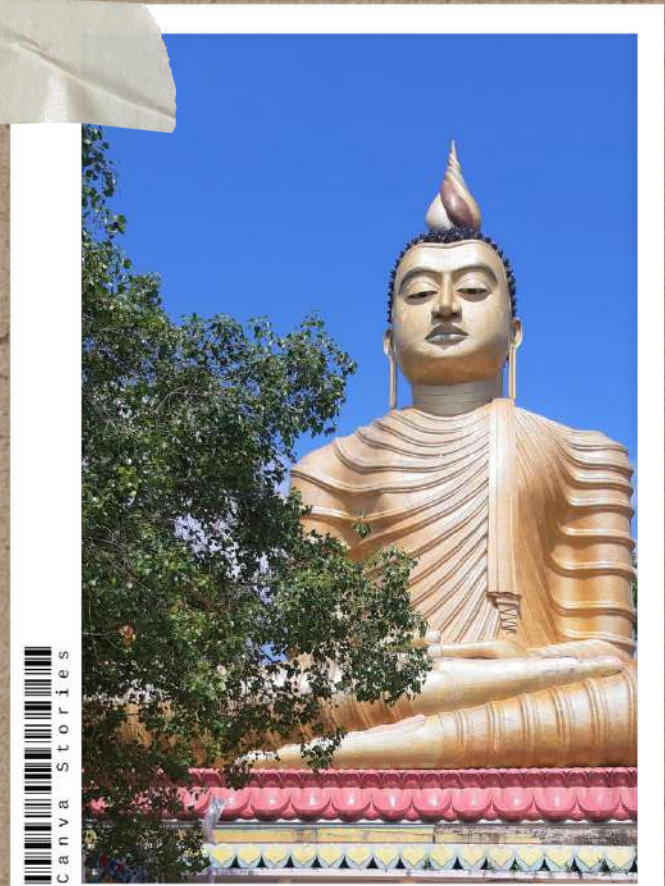
FILM NEGATIVE



FILM NEGATIVE



Wewrukannal a Temple



canva stories

